

VDRG® TGEV Ag Rapid kit

CAT. NO. PS-TGE-11



GENERAL DESCRIPTION

VDRG® TGEV Ag Rapid kit is a lateral flow chromatographic immunoassay for the detection of Transmissible Gastroenteritis virus (TGEV) in porcine feces.

This is a diagnostic kit to detect TGEV antigen by mixing porcine feces with dilution buffer followed by putting them into the specimen hole. If there are TGEV antigens in the porcine feces, these antigens bind to TGEV specific antibody-gold particle conjugates and move on the membrane by capillary forces, and then shows a red line on the test line due to the binding with TGEV specific antibodies which are already applied on the membrane. This test kit, the diagnostic reagent can detect TGEV antigens quickly and simply within 10 minutes after injection of specimens.

KIT COMPONENTS

| Components | 10 Tests/kit |
|-------------------------------|--------------|
| ① TGEV Ag Rapid device | 10 tests |
| ② Sample dilution buffer(1ml) | 10 vials |
| ③ Swabs | 10 ea |
| ④ Dropper | 10 ea |
| ⑤ Instruction Manual | 1 copy |

APPEARANCE

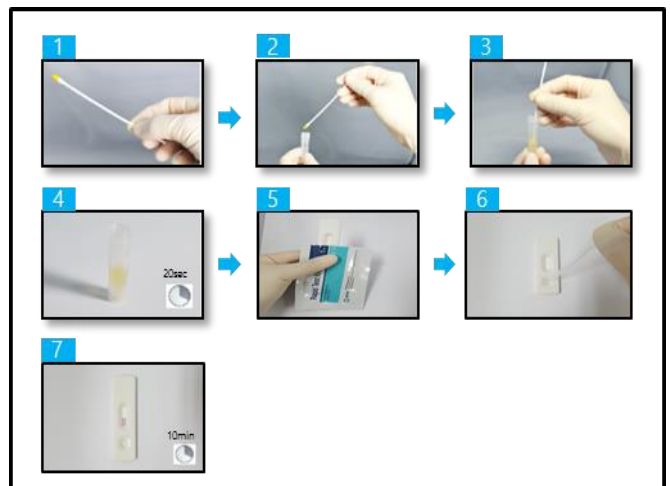
- In a test device : Specimen application round hole (S) is located at lower part of plastic cassette. The location of the test (T) and control (C) lines are marked on the rectangle display. The sample pad, feces separation pad, conjugate pad, nitrocellulose membrane, and absorption pad are attached to the test strip with them overlapped one after another.
- Sample dilution container : There is a transparent and colorless liquid buffer in the plastic container for dilution of a sample.

SAMPLE PREPARATION

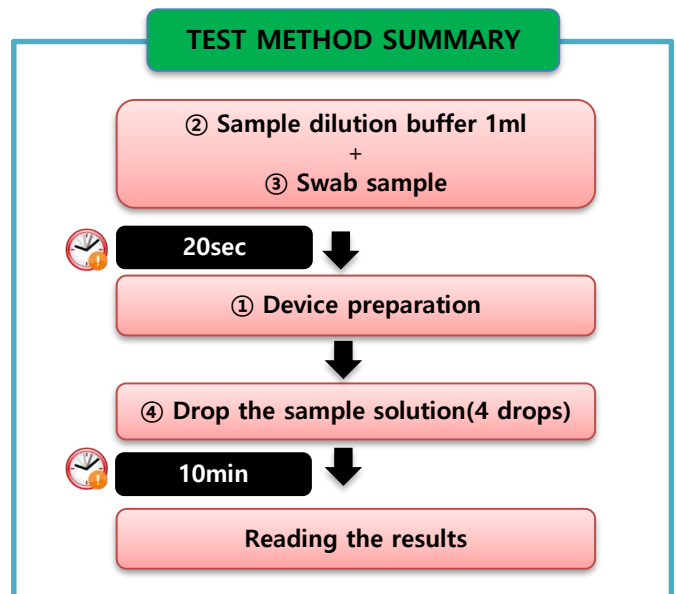
- Use porcine feces as specimens.
- Take the specimen by pricking inside of feces deeply or pulling out directly through pig's anus.
- Then mix together the sample and dilution solution.

TEST PROCEDURE

- Collect a diarrhea specimen from diarrhea feces or those in the anus using (③) swabs for fecal specimen collection.
- Put the specimen into the container that contains (②) sample dilution buffer.
- Stir well the solution with a (③) swab in order to extract the virus from the fecal specimen thoroughly.
- Place the tube upright until the large particles go down. (20 sec.)
- Place the (①)TGEV Ag Rapid device on a flat surface.
- Take the supernatant of specimen solution using (④)dropper, and then instill 4 drops into the test device.
- Verify the result within 10 minutes.



TEST METHOD SUMMARY



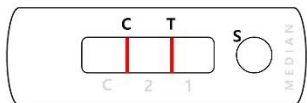
VDRG[®] TGEV Ag Rapid kit

CAT. NO. PS-TGE-11

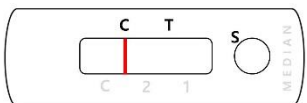


INTERPRETATION OF RESULT

1. Positive when both control and test lines are red.



2. Negative when only control line is red.



3. Re-test when control line is not visible.



* Regardless of TGEV presence, a control line should always appear. The control line is needed to check whether abnormal reaction occurs or not, so if there is no control line, re-test should be performed.

STORAGE AND STABILITY

Store all reagents at 2~30°C. Do not freeze. Reagents remain stable until the expiration date when stored as instructed. **!**

PRECAUTIONS

1. For in-vitro animal diagnostic use only.
2. Read this instruction manual thoroughly and follow all steps strictly for successful use of the product.
3. Extended exposure of this Rapid Test Device to moisture may decrease test performance. Therefore, open the device right before use (<10 minutes).
4. Make sure to use a separate test tube, dropper, and cotton swab for each sample.
5. Do not touch the membrane in the device. The results may be affected.
6. Do not use test device and reagents after expiration date.
7. Wear personal protective equipment (PPE) such as lab coat, goggle, and disposable gloves while performing the assay. Wash hands thoroughly afterwards.
8. All test samples should be considered potentially infectious and all items contacting the samples should be considered contaminated.
9. After use, all wastes should be sterilized with high-pressure steam at 121 degrees Celsius for ≥ 15 minutes or comparable methods.
10. This Rapid Kit is made for preliminary test only. The result should be confirmed by other laboratory tests for final diagnosis.

MEDIAN Diagnostics Inc.

878, Sunhwan-daero, Dongnae-myeon, Chuncheon-si, Gangwon-do, 24399, Republic of Korea

Tel: +82 (0)33 244 0100

Fax: +82 (0)33 244 4634

E-mail: median@mediandx.com